



Use of Star TSP650 printer



United Nations
Educational, Scientific and
Cultural Organization

Regional Centre for
Library Information Systems and
Current Research Information Systems
Regionalni center za knjižnične
informatijske sisteme in informatijske
sisteme o raziskovalni dejavnosti



© IZUM, 2024

IZUM, COBISS, COMARC, COBIB, COLIB, CONOR, SICRIS, E-CRIS, COBISS3, mCOBISS, COBISS+, dCOBISS, COBISS4, SGC, COBISS Lib, COBISS Cat, COBISS Ela are registered trademarks owned by IZUM.

CONTENTS

- 1 Introduction 1
- 2 Printer installation..... 1
- 3 Driver setup 1
- 4 Setup in the COBISS Lib application..... 4
- 5 Printing from the PDF reader 7

FIGURES

- Figure 1: Star TSP650 printer 1
- Figure 2: Star TSP650 driver name 1
- Figure 3: Printer properties 2
- Figure 4: Default settings 2
- Figure 5: Additional settings 3
- Figure 6: Paper size selection 3
- Figure 7: COBISS Lib user interface and testing connections 4
- Figure 8: COBISS Lib user interface and logical destinations 4
- Figure 9: Logical destinations editor 5
- Figure 10: Selecting a printer 6
- Figure 11: Refreshing the settings in the COBISS Lib user interface 6
- Figure 12: Printing from Adobe Reader 7
- Figure 13: Page customisation 7

1 Introduction

This document provides instructions on how to use the Star TSP650 printer. The printer is used in the COBISS system for printing lending notes, invoices, etc.



Figure 1: Star TSP650 printer

2 Printer installation

When you connect the printer, the drivers are installed automatically. If you encounter problems when installing the driver, the drivers are also available on the official Star Micronics website: <https://starmicronics.com/support/>.

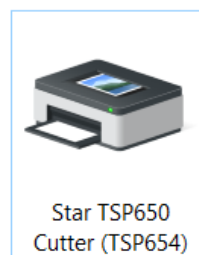


Figure 2: Star TSP650 driver name

3 Driver setup

Before printing, adjust the printer settings. By default, the printer does not print pages longer than one A4 page. This is done in the **Control Panel** by selecting **Devices and Printers**. Select the *Star TSP650 Cutter (TSP654)* printer and right-click on it. Select **Printer properties** from the additional options.

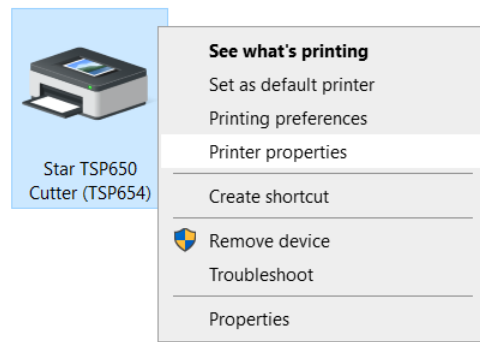


Figure 3: Printer properties

When you select **Printer properties**, a new window will open, where you select the **Advanced** tab and select the **Printing Defaults...** option.

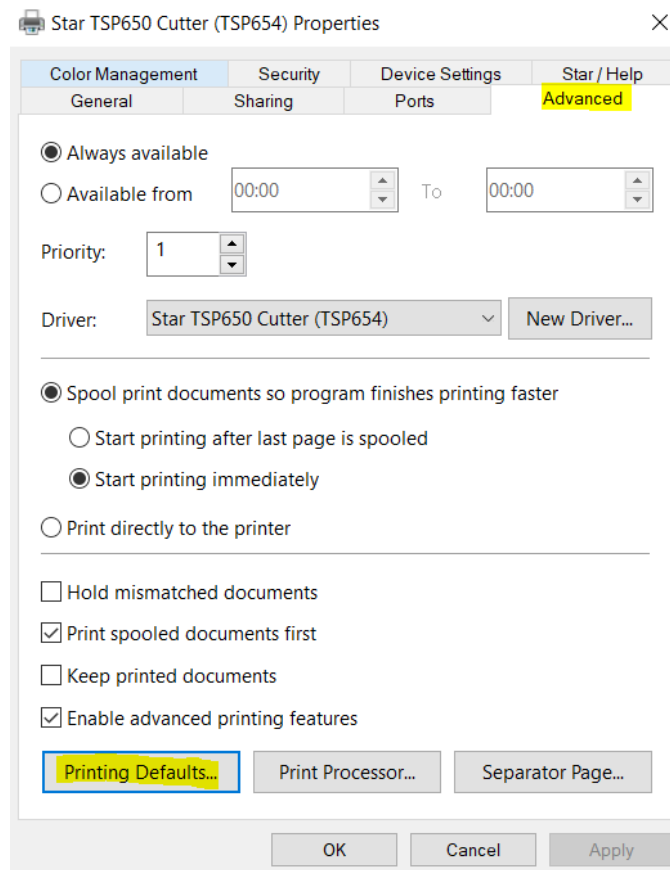


Figure 4: Default settings

In the new window in the **Layout** tab, click the **Advanced...** button.

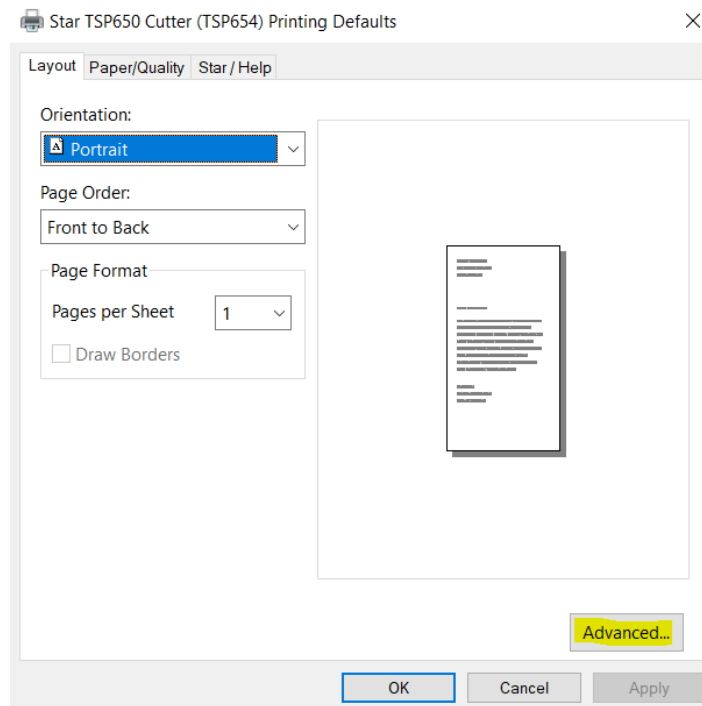


Figure 5: Additional settings

In the window under **Paper Size**, select **72mm x Receipt** from the drop-down list. Confirm the selection by clicking **OK** and close the printer driver window.

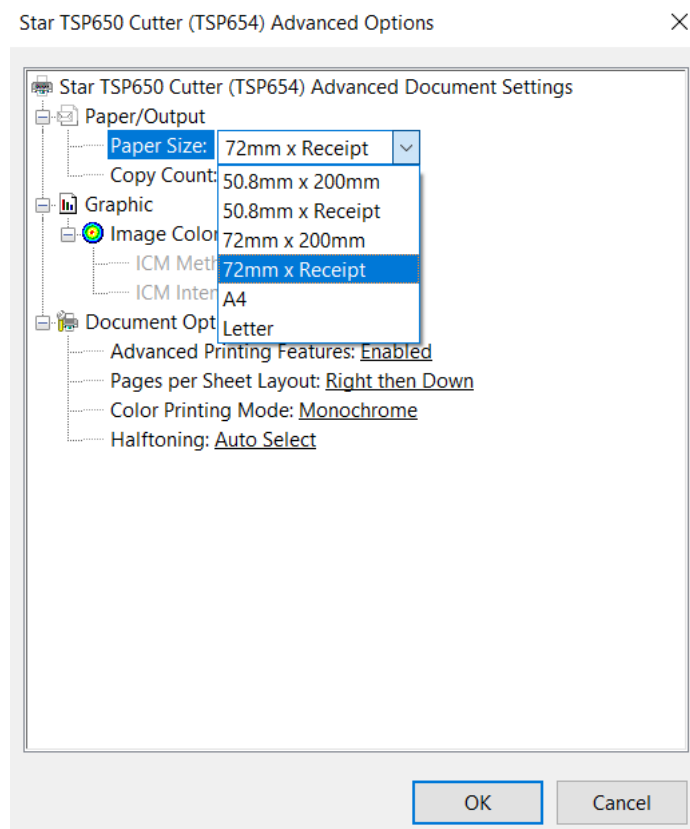


Figure 6: Paper size selection

4 Setup in the COBISS Lib application

The COBISS DGW service must be installed before it is possible to use printers in COBISS Lib: https://www.cobiss.si/priporocena-oprema/doc/Namescanje_COBISS_DGW.pdf

To check if the installation was successful in COBISS Lib, you can use the method **Settings and administration / Server / Test connection with COBISS DGW**. The message “COBISS DGW is connected!” means that the installation was successful and that you can continue adding printers to the logical destinations.

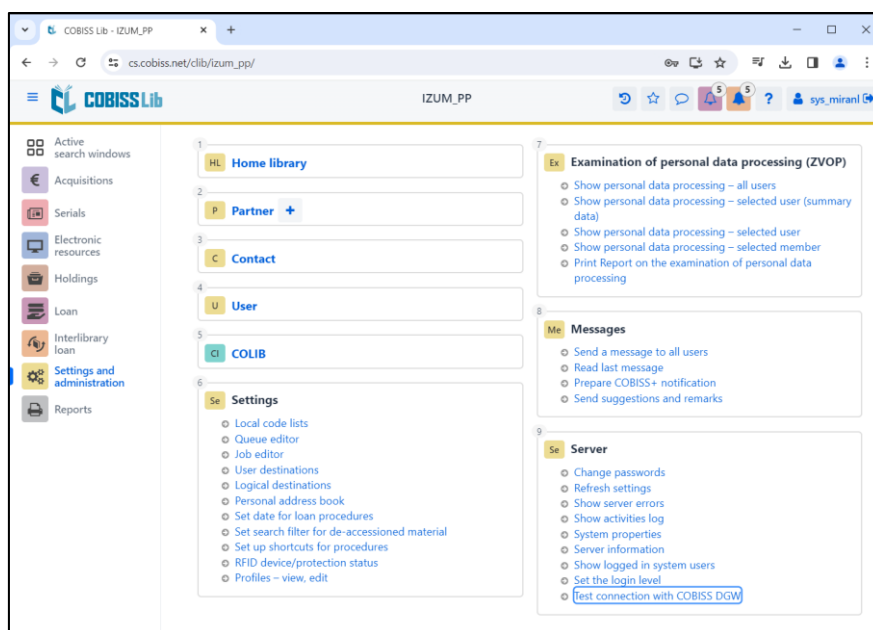


Figure 7: COBISS Lib user interface and testing connections

In COBISS Lib, select **Settings and administration / Settings / Logical destinations**.

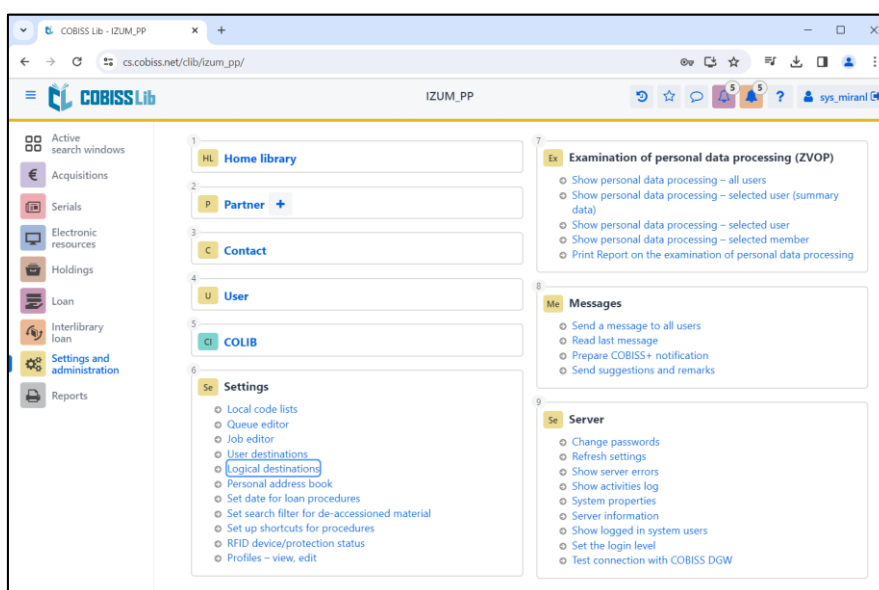


Figure 8: COBISS Lib user interface and logical destinations

The **Logical destinations editor** window will open, where you select the option *Lending note – Loan: [default local printer]* and click the **Edit** button.

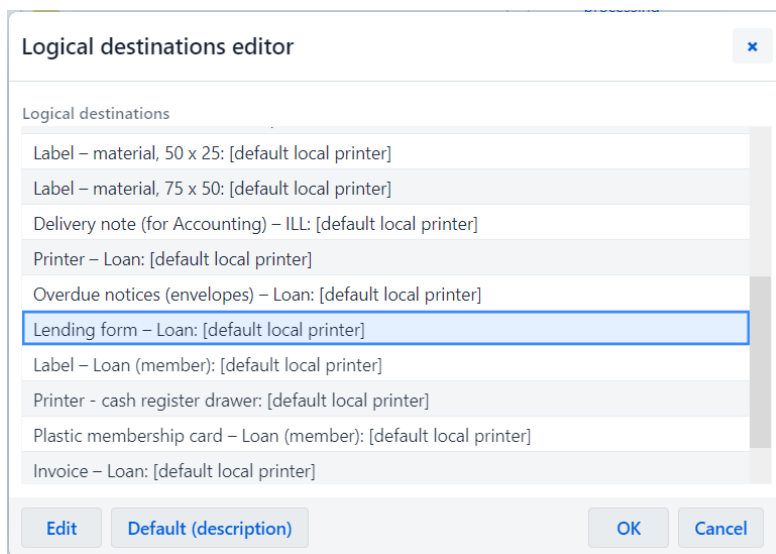
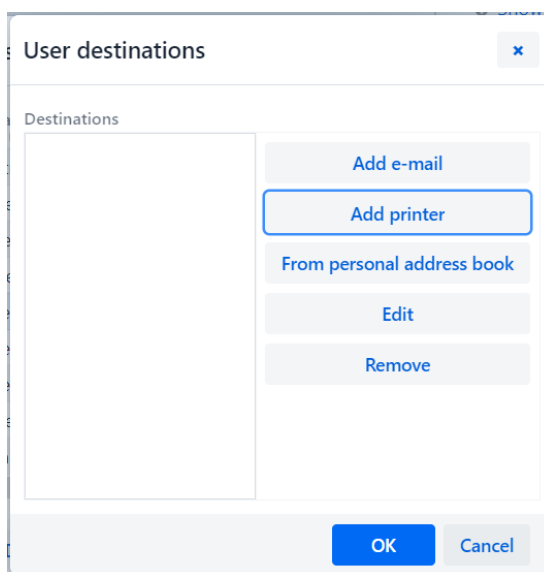


Figure 9: Logical destinations editor

The **User destinations** window will open where you click the **Add printer** button. In the new window, select the *Star TSP650* printer that you intend to use for printing lending notes.



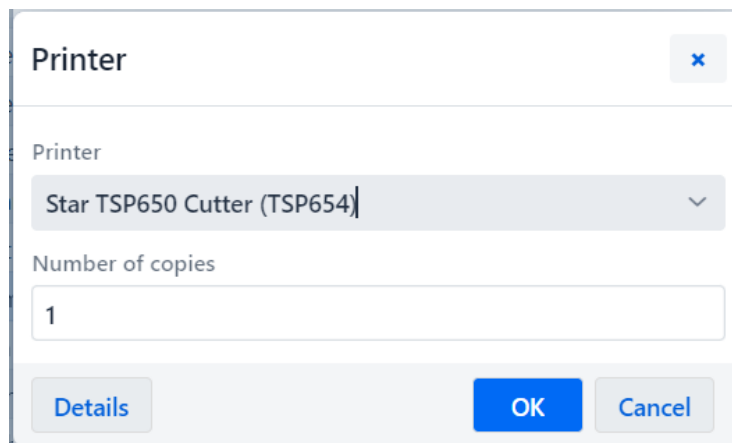


Figure 10: Selecting a printer

Once you define all the settings, confirm each selection by clicking the **OK** button. Finally, select **Refresh settings** in the **System** menu.

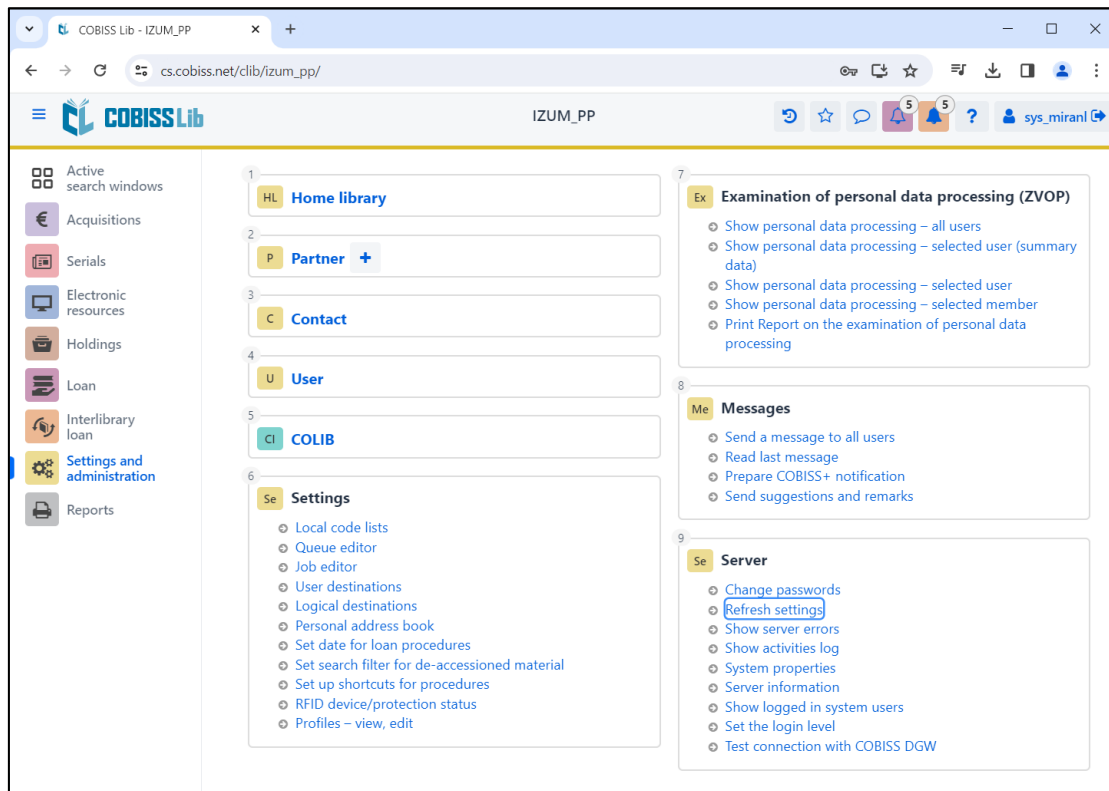


Figure 11: Refreshing the settings in the COBISS Lib user interface

If you wish to use the same printer to print invoices, then the procedure is the same as described in the previous steps. The only difference is you have to set *Invoice – Loan* as the logical destination.

5 Printing from the PDF reader

When you print a PDF document directly on the selected reader, select **File** and then **Print...**

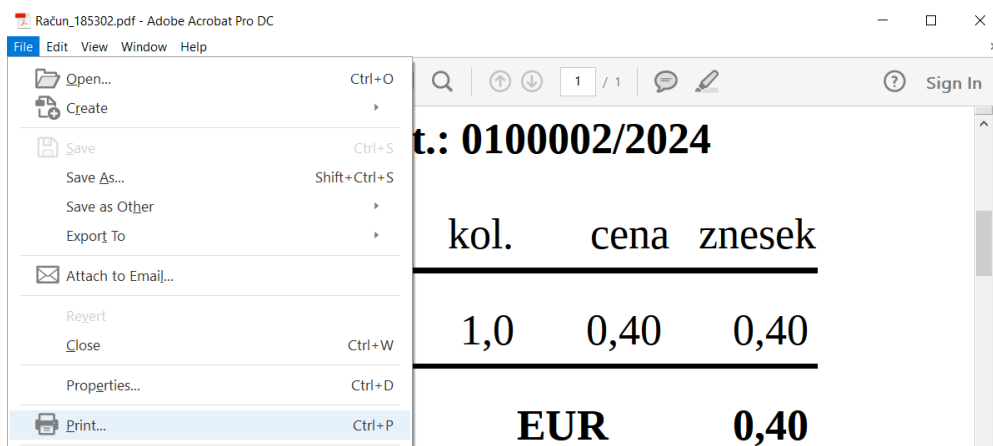


Figure 12: Printing from Adobe Reader

Under **Printer**, select *Star TSP650 Cutter* and select **Actual size**.

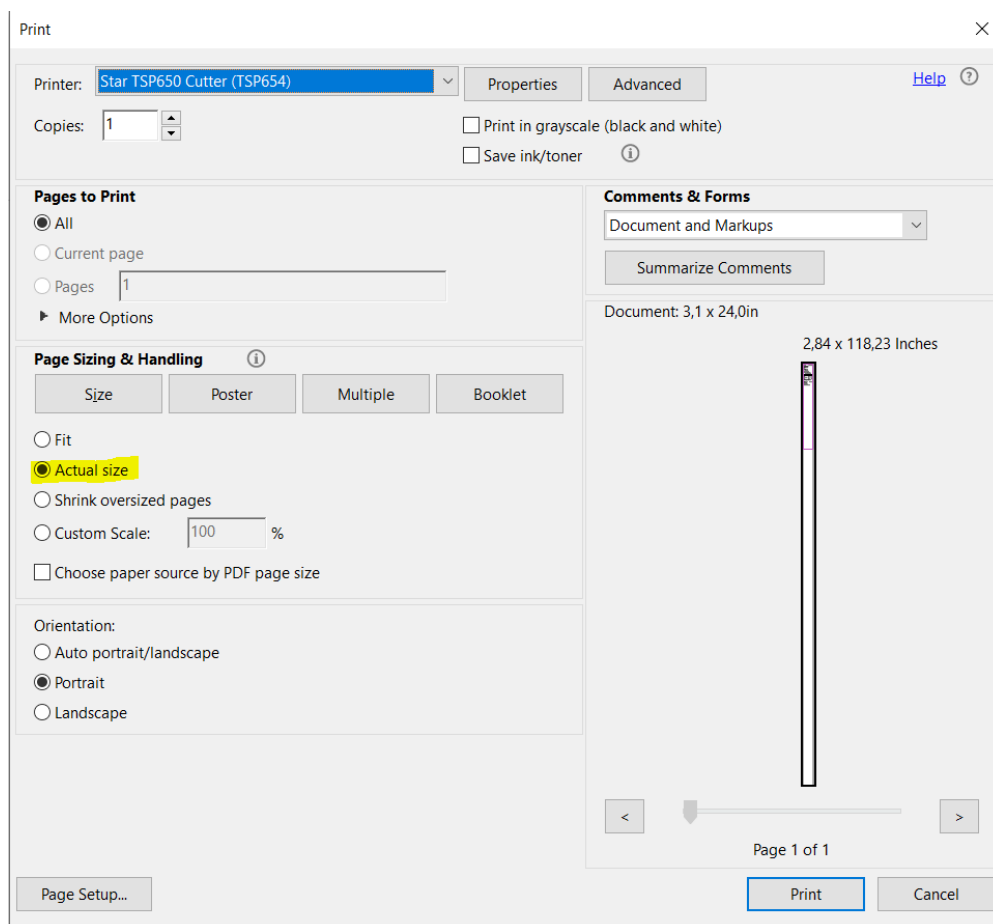


Figure 13: Page customisation